

Jig Machine/Saw-tooth Wave Jig Machine

Description:

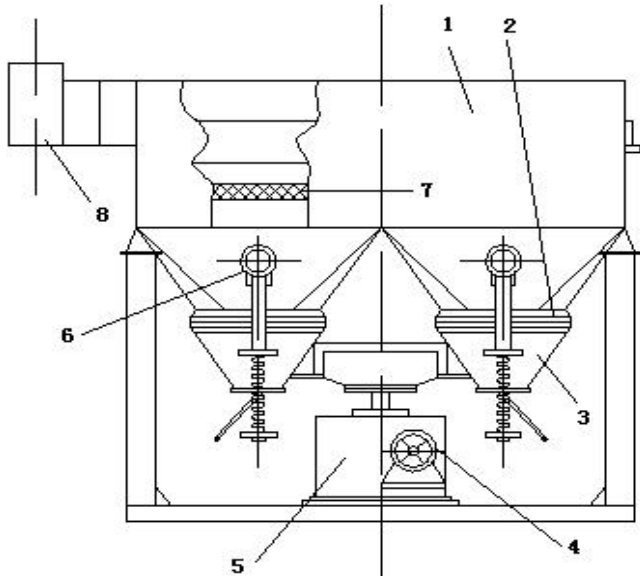
Our Saw-tooth Wave Jig Machine is a new type of energy saving and high efficient gravity separation equipment and developed based on the traditional Sine Wave Jig Machine. The difference between Saw-tooth Wave Ladder Jig and Sine Wave Jig is that the pulsation curve for jigging is saw-tooth wave shape, with speedy upward flow and slow downward flow. Bed layer is elevated integrally and slowly dropped with a long effective loose time, allowing significant increase of handling capacity for unit screen surface, decrease of lower limit of grain size recovery and large save of make-up water for undersize fraction.

Industrial tests carried out of Saw-tooth Wave Jig and Sine Wave Jig for comparison showed that the recovery rate for operation of Saw-tooth Wave Jig is raised by Sn:3.01%, W:5.5%, Pb:1.63%, Zn:2.04%; The water consumption reduces 30%-40% than traditional Jig. The area reduces 1/3 and the stroke may adjust also.

Saw-tooth Wave Jig Machine Feature

- ◆ **High capacity**
- ◆ **High concentration ratio and high recovery**
- ◆ **Fabricated with highest quality material**
- ◆ **Easy to install, operate and maintain**
- ◆ **The pulsation curve is saw-tooth wave shape facilitate heavy mineral to settling**
- ◆ **Saving water 30-40% than ordinary jig**
- ◆ **The pulsation speed very easy adjusted by regulator**
- ◆ **Suitable for roughing and cleaning**
- ◆ **Can achieve a good result in processing such as placer gold, tungsten, iron, tin, hematite, copper, tantalum-niobium, titanium, manganese, barite, zirconium, chrome and gemstone etc.**

Technical Specification



1. Hutch
2. Rubber diaphragm
3. Cone
4. Electromagnetism speed governor
5. Cam case
6. Flange of make-up water pipe
7. Screen
8. Feeding tank

JT2-2 Saw-Tooth Wave Coal Jig

Construction drawing of JT2-2 Saw-tooth Wave Jig

Saw tooth Jig machine

Model	Hutch		Diaphragm		Feeding Size (mm)	Amount of make-up water (m ³ /t)	Make-up water pressure (Mpa)	Capacity (t/h)	Power (kw)	Dimensions (mm)	Weight (Kg)
	Shape	Area (m ²)	Stroke (mm)	Frequency of Stroke (r/min)							
JT3-1	Trapezoid	3	12-30	50-125	<10	3-6	≥0.05	7.5-15	5.5	2745×2000×3030	3085
JT4-2	Rectangle	5	25-57		<25	4-8		8-20	7.5	4240×1990×2750	3098
JT4-2S	Rectangle	5	25-57		<25	4-8		8-20	5.5×2	4240×1990×2750	3500
JT5-2	Trapezoid	4.86	12-30		<10	3-6		12-25	7.5	3600×2000×2600	4500

Application:



Gold and diamond plant in Liberia



Mobile diamond plant



Tin jig machine



jig separator



Gold jig plant

